

October 2002
TBCTX-0015

Strata CTX Time/Date Change

This bulletin is designed to help you change the Time and Date. This is important as the October 27th end of Daylight Savings time draws near. The time and date can be changed using any of the following methods.

Method 1: Using CTX WinAdmin

This method is quick and easy for a technician that has a PC and who is knowledgeable using CTX WinAdmin. This method can also be used remotely. Follow the steps below to set system clock and date using WinAdmin.

1. From the Program Menu, click Operation > System Setup.

The System Setup screen displays (shown right).

2. Click the Date drop-down and select the appropriate date from the drop-down box.
 - You can use the left and right arrows to navigate to the Month and Year.
 - Format the date as YYYYMMDD, where YYYY = Year, MM = Month and DD = Day
 - Current Day of Week will display once the Year, Month and Day parameters have been entered. Sunday ~ Saturday is Read only, default is no value.

The screenshot shows the 'System Setup' window in a Microsoft Internet Explorer browser. The window title is 'CTX WinAdmin 1.XX - Microsoft Internet Explorer'. The main content area is titled 'System Setup' and contains several sections:

- 900 CTX Restart:** Contains two buttons: 'Restart CTX' (green) and 'Initialize CTX' (red).
- 901 CTX Version And Processor Hardware:** Contains fields for 'System Type' (CTX670), 'Active Software' (AR1.01.M0010.00), and 'Standby Software' (AR1.01.M0010.00). It also has checkboxes for 'DTMF', 'DREG Version' (12), 'BBMS', 'IPL Version' (1), 'BEXS', 'BSIS', 'Ethernet', and 'Modem'.
- 902 CTX Date & Time:** Contains a 'Date' dropdown menu (2004/05/09), a 'Time' field (2:15:52 PM), a 'Day of Week' dropdown (Sunday), and a 'Leap Year' dropdown (Leap).
- 915 Regional Selection:** Contains a 'Country' dropdown menu (USA).

On the left side, there is a navigation menu with options like 'System Setup', 'Smart Media', 'Program Update', 'Data Backup', 'IP Configuration', 'FTP User Account', 'File Information', 'Community Name', 'MAC Address', 'Trap IP Setup', 'License Control', 'License Information', 'Maintenance', 'Tools', 'Profile', and 'HOME'.

Note Leap Year will display based on the year entered. Leap, Leap Next x, where x = 1, 2 or 3. X. is the number of years since the previous leap year (Read only) (default = no value).

3. Set the Time in the time field.
4. Click Submit.

Toshiba America Information Systems, Inc.

Telecommunication Systems Division
9740 Irvine Blvd., Irvine, CA 92618-1697 (949) 583-3700
www.telecom.toshiba.com

Method 2: Using Programming Telephone

The technician or end user that has access to a programming telephone can change the Time and Date. However, this method requires someone to be onsite.

Note If the end user is asked to use this method, they must be given the programming password and enter more than 30 key strokes.

Program Number(s): 902

Prerequisite Program: None

Access Sequence: Log in to programming mode from your telephone button pad:
Hold *##*#1*2*3*.

At the **PASSWORD=** prompt, Enter your password and press **Hold**.

At the **PROG=** prompt enter **902** and press **Hold**

1. Press **FB01** to enter current Strata CTX Date. See table below for format.
2. Press **Hold** to program.
3. Press **FB02** to enter current Strata CTX time. See table below for format.
4. Press **Hold** to program.

FB Name	FB	Summary	Value	LCD Prompt
Date	01	Enter current system date in this field.	yymmdd format yy = current year mm = current month dd = current day	DATE=
Time	02	Enter the current time in this field.	hhmmss format hh = current hour mm = current minute ss = current second	TIME=

5. Press **Hold** to submit, then **# # Hold** to return to the **PROG=** prompt.
6. Enter another program number to continue programming or press **# # Hold** again to exit programming mode.

Method 3: Using Strata CTX Release 1.02 MA228 or Higher Software

Strata CTX Release 1.02 MA228 software includes an enhancement that makes it easy for end users to change the date and time settings from any digital LCD telephone.

Important! *Strata CTX Release 1.02 MA228 must be used with CTX WinAdmin Version 1.17 or higher.*

This method enables end users to change the time and date quickly and easily from any DKT. (If security is desired, custom feature access can be provided with different feature codes). However, the new system software must be installed on the Strata CTX and the update process can take anywhere from 10 minutes to an hour.

Step 1: Obtain and Install Current Software

1. If your system does not have Release 1.02 MA228 software, download it from Internet FYI and install it. Refer to Technical Bulletin TBCTX-0016 “*Strata CTX Software Update Procedures*” for more details.
2. Make sure you’re using CTX WinAdmin Version 1.17. If not, download it from Internet FYI and install it on your Programming PC.

Note Both software upgrades are free of charge to authorized Toshiba dealers.

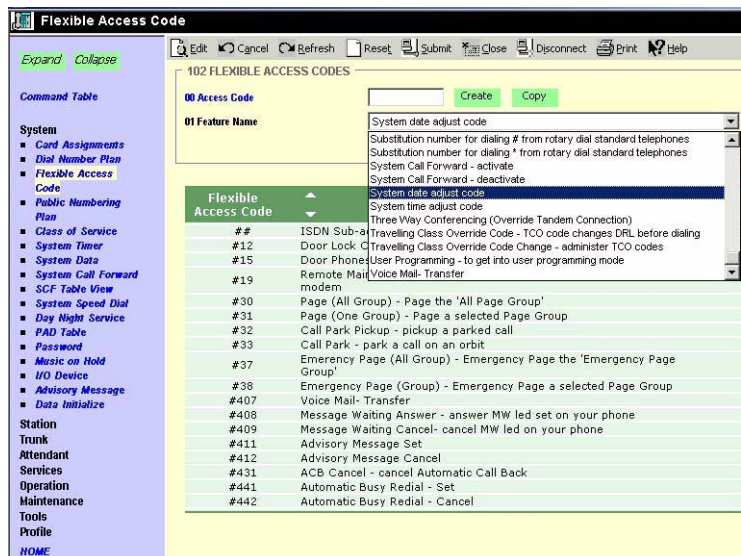
Step 2: Change Flexible Access Codes

You must program the Flexible Access Codes for the System Date Adjust code and the System Time Adjust Code to enable the users to set the date and time on their telephones. You can use these codes using either CTX WinAdmin or the Programming Telephone.

Using CTX WinAdmin

Important! *If you backup a CTX database (default.dat) with a CTX software (MA227 or older) that does not support Time/Date access codes and then restore it to a CTX software that supports these access codes, you must use this program to set the Time/Date access codes. This must be done to allow end users to set the Time/Date from their LCD digital telephones.*

1. Select System > Flexible Access Codes.
2. Click the Create button.
3. Enter new feature/access code. Default codes are:
 - #651 = change date
 - #652 = change time
- Note** The System date adjust code and System time adjust code can be programmed differently for every system.
4. Click OK.
5. Select the feature to be assigned: “System date adjust code” or “System time adjust code” from the Feature Name drop down menu.
6. Submit your data.
7. Click Refresh to ensure the codes were entered.



Note It is not necessary to set the Day of Week in Strata CTX, the Day of Week is automatically based on the programmed date.

Using Programming Telephone

- Follow the standard procedure for entering Telephone Button Programming status, then refer to the following table to program the access codes.

Program 102

Prog.	Button	Sequence	Value(s)	Summary
102		Flexible Access Plan 102, Hold		Assigns feature access codes, individual line access codes and outgoing line group (OLG) access codes to the Flexible Numbering Plan. Does not include PDNs, PhDNs, Pilot numbers, or Hunt Group pilot numbers.
	00	Access Code n, Hold,	DIGIT = #651 (date, default) #652 (time, default)	Enter the values specified. (To enter #, press Vol▲ + #.) The Vol▲ displays as & on the LCD.
	01	FB01 , nnn, Hold	FEATURE = 3 digit Feature Code index. 910 (system date) 911 (system time)	Select the Feature to which the access code is being assigned.
	Note	#651 and #652 are default access codes; they can be changed if needed for security or other reasons.		

Important! *The instructions on the following page show an end user how to change date and time from any digital telephone after the system has been programmed to do so. To prevent unauthorized changing of date and time, these instructions are not given in the user guide; however they can be copied and distributed using your own discretion.*

Using Your DKT Telephone to Change CTX System Date And Time

Once your telephone system software has been upgraded to MA228 or higher; and the access codes **#651** and **#652** have been programmed into your system by your installing/servicing dealer, you can change the system date and time from any DKT3000- or 2000-series LCD telephone using the following steps:

► To set the date

1. Press an idle extension (Primary Directory Number or Secondary Directory Number) on your telephone. You hear dial tone.
2. While listening to dial tone, enter **#651**. You hear a confirmation tone.
If you hear fast busy, the feature code has been changed or is not programmed.
3. Enter the date as YYMMDD, where YY = Year, MM = Month and DD = Day.
Example: To enter October 9, 2002, enter 021009.
4. Press **#**. You hear a confirmation tone.
5. Press **Spkr**. The telephone returns to the idle mode with your telephone LCD displaying the new set date.

#651

#651 021009

NO. NNN
OCT 09 FRIDAY 12: 05

► To set the time

1. Press an idle extension (Primary Directory Number or Secondary Directory Number) on your telephone. You hear dial tone.
2. While listening to dial tone, enter **#652**. You hear a confirmation tone.
If you hear fast busy, the feature code has been changed or is not programmed.
3. Enter the time as HHMMSS in the 24-hour clock format, where HH = hour, MM = minute and SS = seconds. Use leading zeros.
Examples: To enter 6:05AM and 30 seconds, enter 060530; and 2:30PM and 45 seconds, enter 143045.
4. Press **#**. You hear a confirmation tone.
5. Press **Spkr**. The telephone returns to the idle mode with your telephone LCD displaying the new set time.

#652

#651 120500

NO. NNN
OCT 09 FRIDAY 12: 05

Notes

- The day-of-week (Monday, Tuesday, etc.) is automatically set by the system.
- Contact your installing/servicing dealer if you encounter any difficulties using the above steps. To locate a dealer, visit the Toshiba website at www.toshiba.com or call the Dealer Referral line at 1-800-222-5805.

